



BRILAND RESIDENCES AND MARINA
BAHAMAS

BACK OF HOUSE - RENDERING SCALE: N.T.S.
Schematic Design JANUARY 2020

CMA Design Studio, Inc.
ARCHITECTURE PLANNING INTERIOR DESIGN
232 Andalusia Avenue • Suite 101 • Coral Gables, Florida 33134 • T: 305.448.4200



BRILAND RESIDENCES AND MARINA
BAHAMAS

BACK OF HOUSE - RENDERING SCALE: N.T.S.
Schematic Design JANUARY 2020

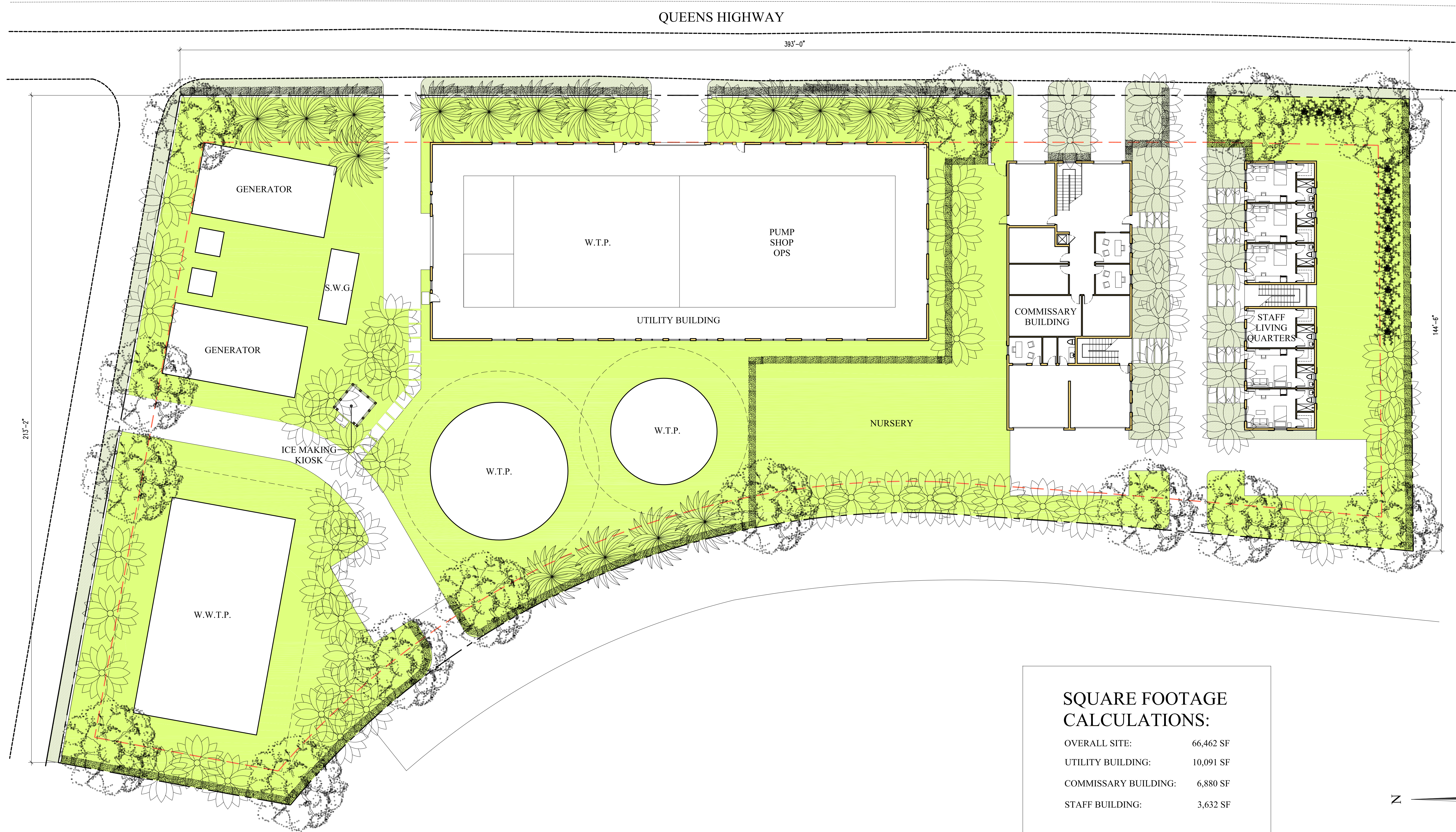
CMA Design Studio, Inc.
ARCHITECTURE PLANNING INTERIOR DESIGN
232 Andalusia Avenue • Suite 101 • Coral Gables, Florida 33134 • T: 305.448.4200



BRILAND RESIDENCES AND MARINA
BAHAMAS

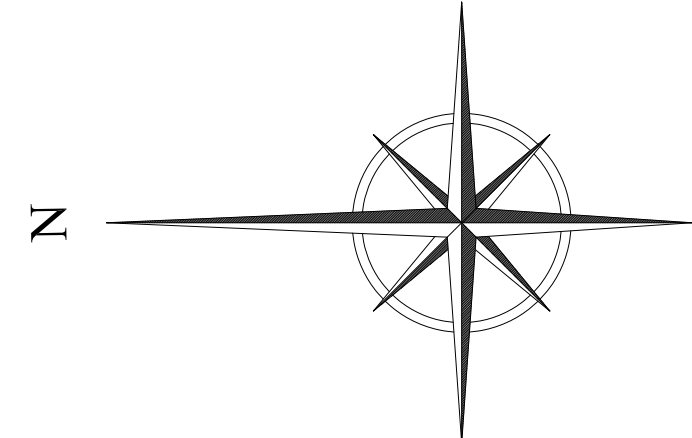
BACK OF HOUSE - RENDERING SCALE: N.T.S.
Schematic Design JANUARY 2020

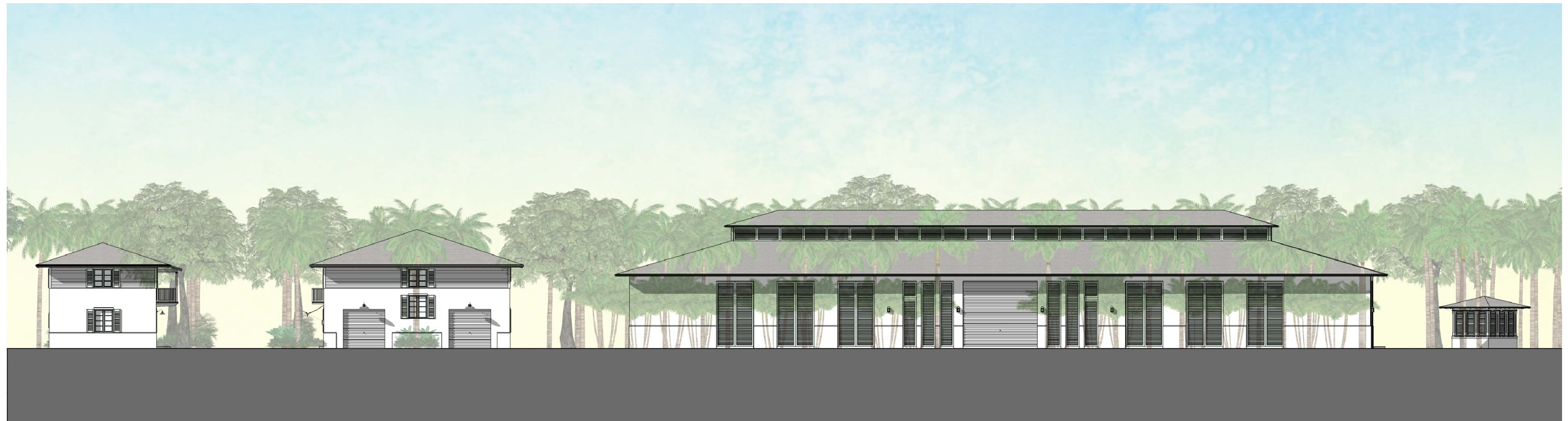
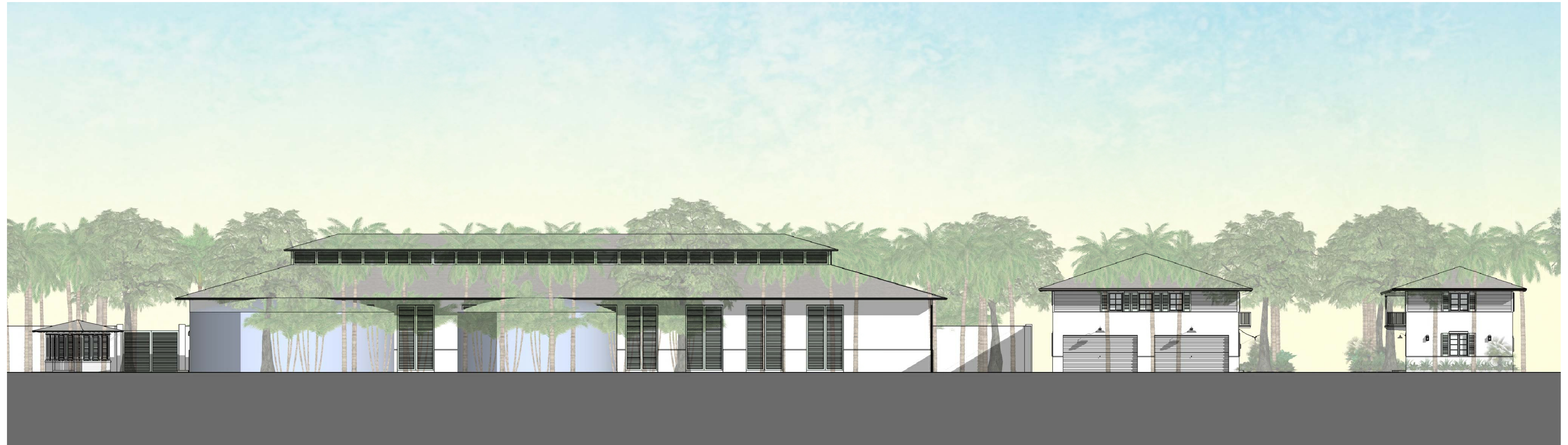
CMA Design Studio, Inc.
ARCHITECTURE PLANNING INTERIOR DESIGN
232 Andalusia Avenue • Suite 101 • Coral Gables, Florida 33134 • T: 305.448.4200



SQUARE FOOTAGE CALCULATIONS:

OVERALL SITE:	66,462 SF
UTILITY BUILDING:	10,091 SF
COMMISSARY BUILDING:	6,880 SF
STAFF BUILDING:	3,632 SF

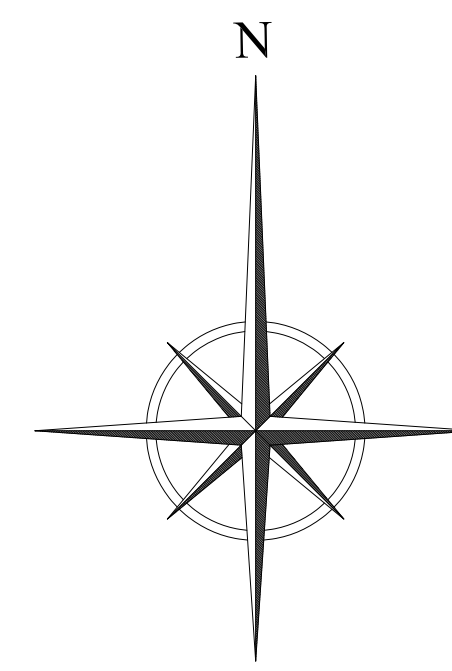
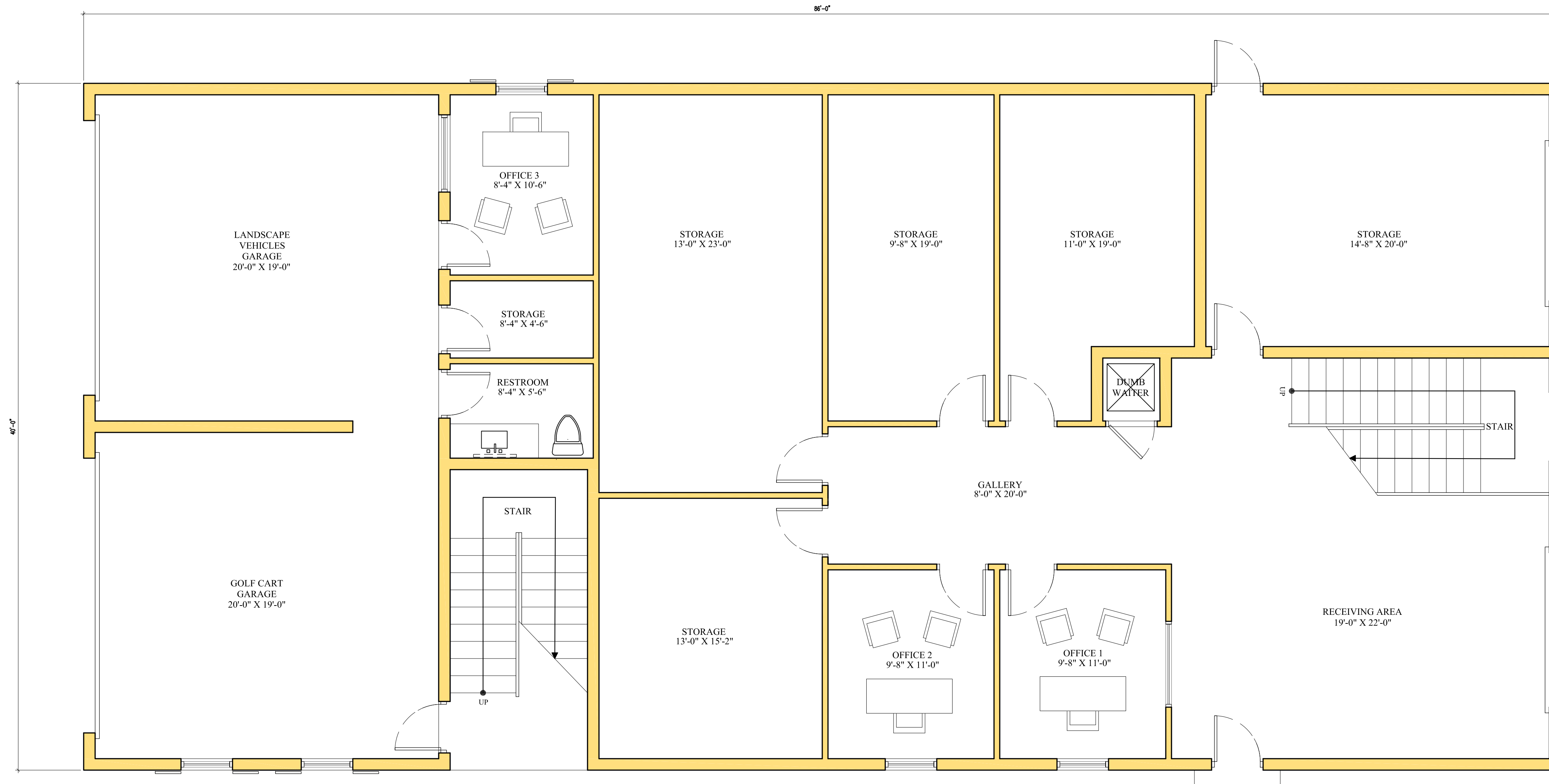


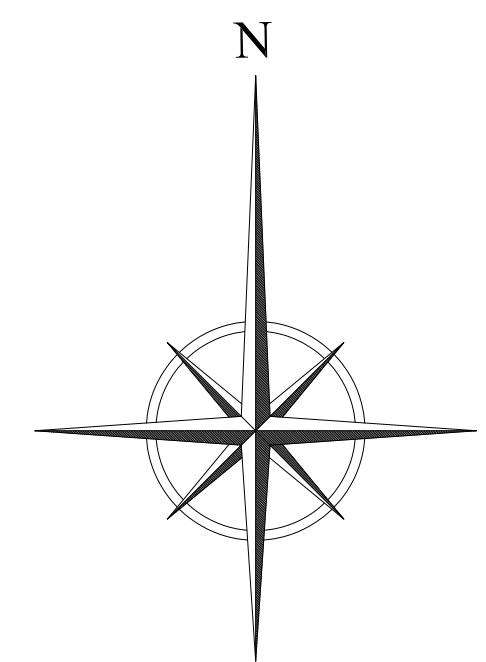
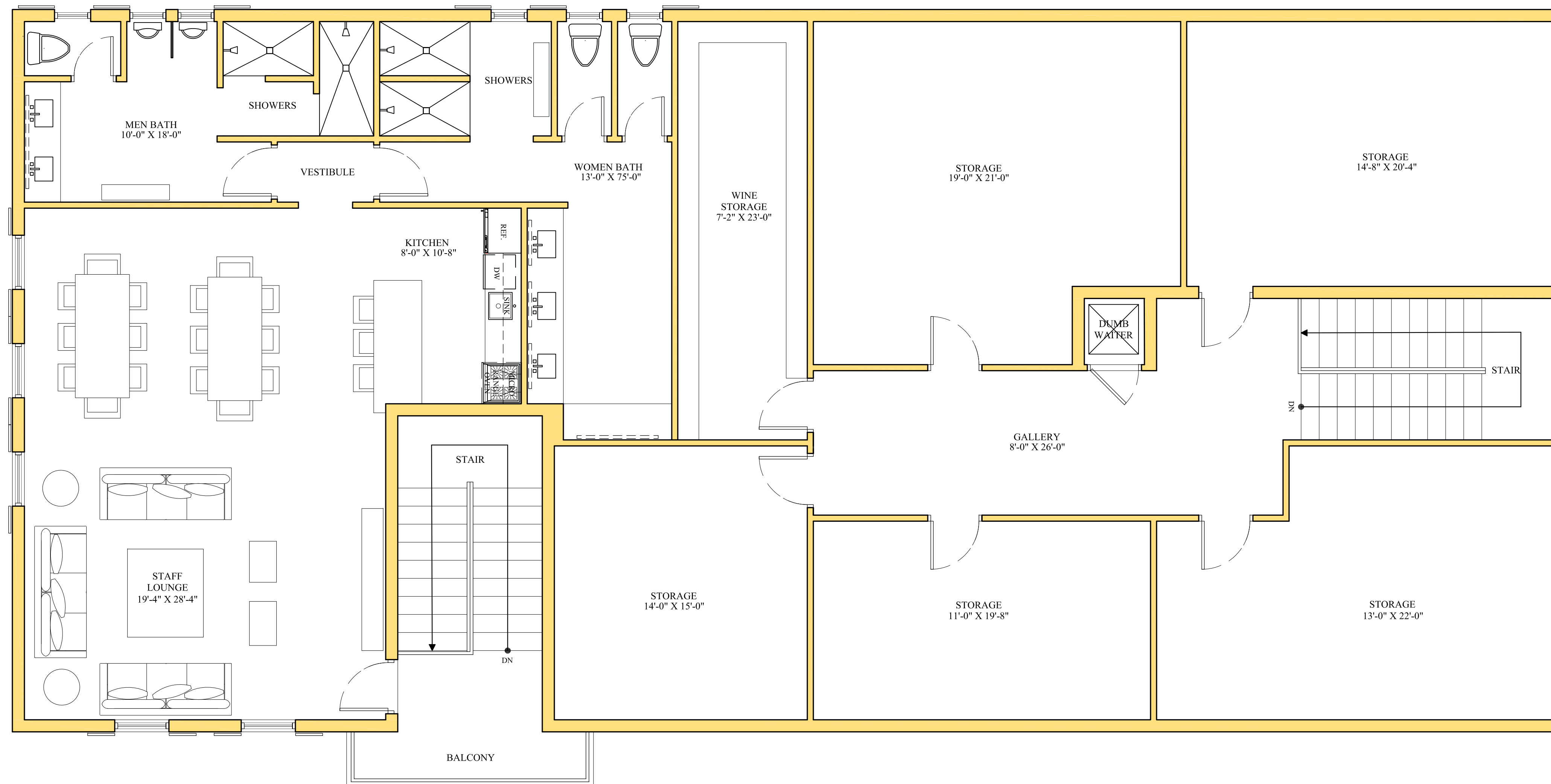


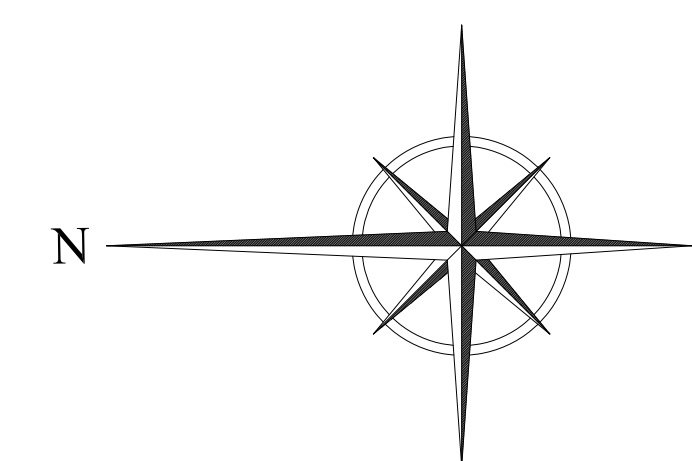
BRILAND RESIDENCES AND MARINA
BAHAMAS

BACK OF HOUSE - SITE PLAN OVERALL ELEVATIONS SCALE: 3/32"=1'-0"
Schematic Design JANUARY 2020

CMA Design Studio, Inc.
ARCHITECTURE PLANNING INTERIOR DESIGN
232 Andalusia Avenue • Suite 101 • Coral Gables, Florida 33134 • T: 305.448.4200



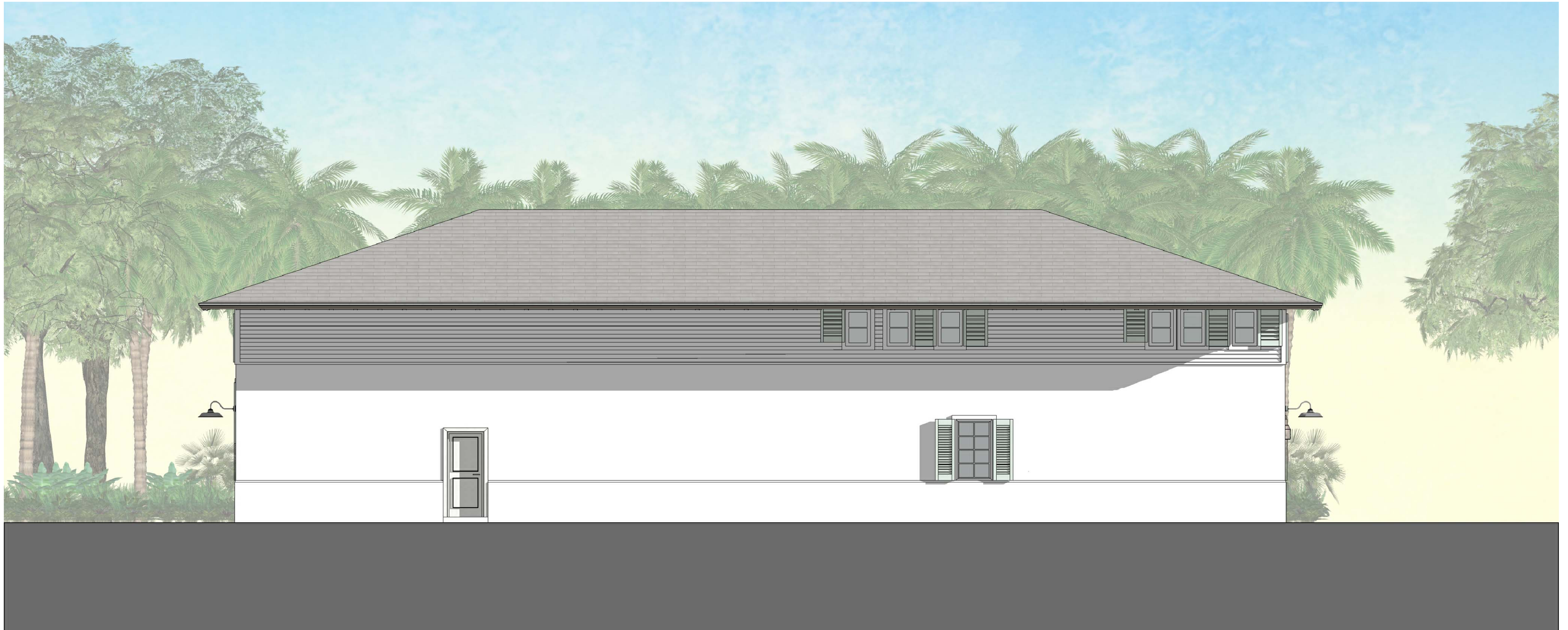




BRILAND RESIDENCES AND MARINA
BAHAMAS

BACK OF HOUSE - COMMISSARY BUILDING - FRONT ELEVATION SCALE: 1/4"=1'-0"
Schematic Design JANUARY 2020

CMA Design Studio, Inc.
ARCHITECTURE PLANNING INTERIOR DESIGN
232 Andalusia Avenue • Suite 101 • Coral Gables, Florida 33134 • T: 305.448.4200



BRILAND RESIDENCES AND MARINA
BAHAMAS

BACK OF HOUSE - COMMISSARY BUILDING - REAR ELEVATION SCALE: 1/4"=1'-0"
Schematic Design JANUARY 2020

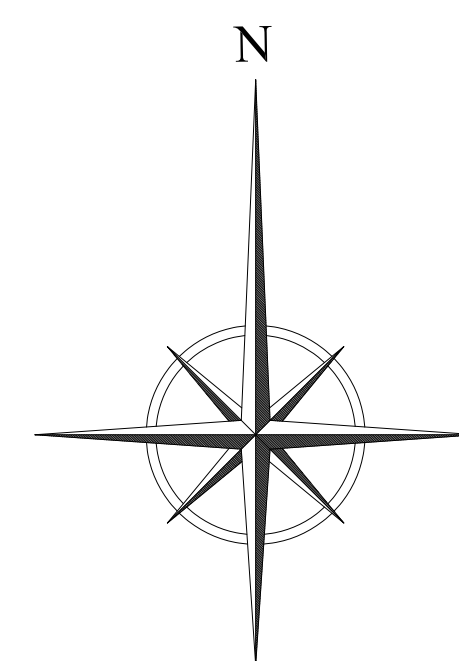
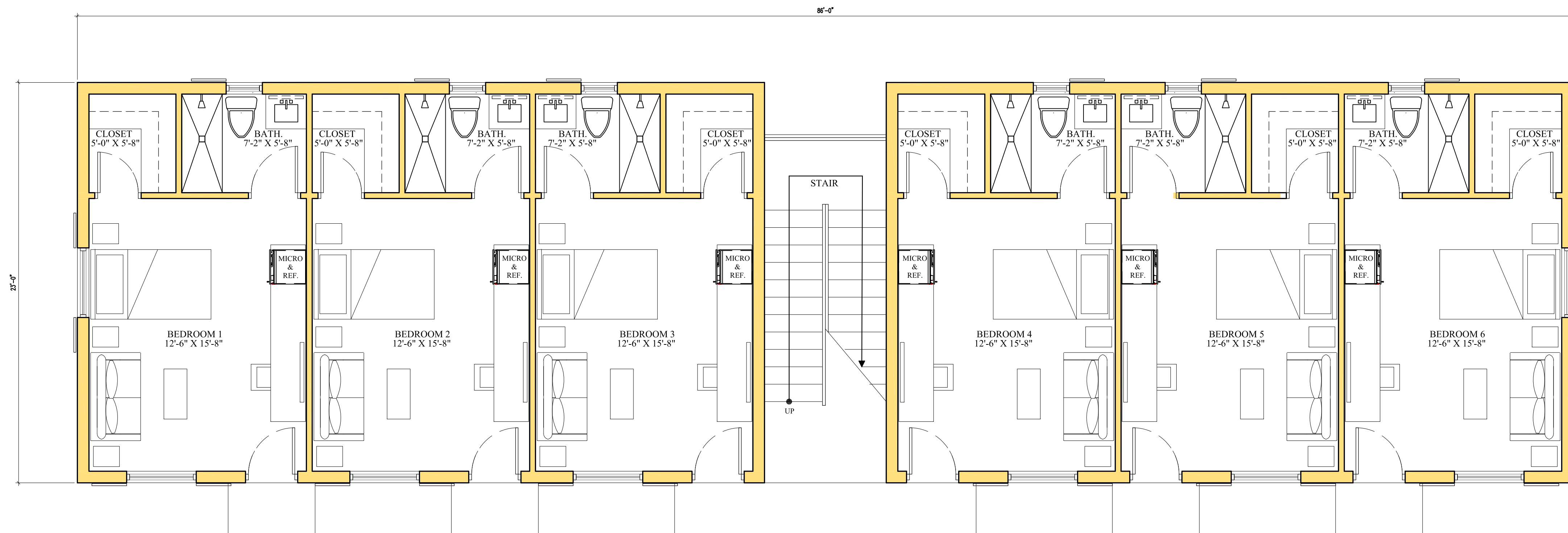
CMA Design Studio, Inc.
ARCHITECTURE PLANNING INTERIOR DESIGN
232 Andalusia Avenue • Suite 101 • Coral Gables, Florida 33134 • T: 305.448.4200



BRILAND RESIDENCES AND MARINA
BAHAMAS

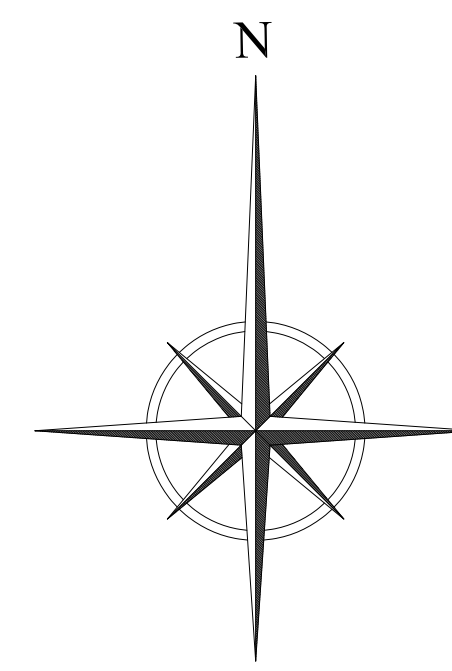
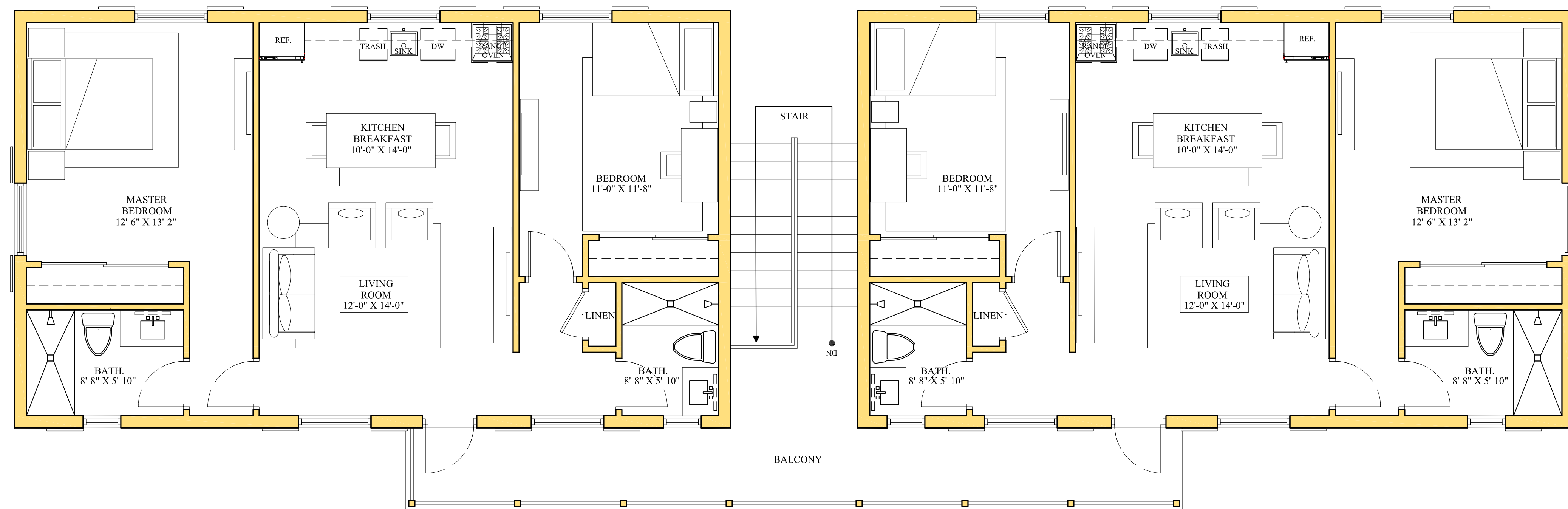
BACK OF HOUSE - COMMISSARY BUILDING - SIDE ELEVATIONS SCALE: 1/4"=1'-0"
Schematic Design JANUARY 2020

CMA Design Studio, Inc.
ARCHITECTURE PLANNING INTERIOR DESIGN
232 Andalusia Avenue • Suite 101 • Coral Gables, Florida 33134 • T: 305.448.4200



BRILAND RESIDENCES AND MARINA BACK OF HOUSE - STAFF LIVING QUARTERS BUILDING - FIRST FLOOR PLAN SCALE: 1/4"=1'-0"
 BAHAMAS
Schematic Design JANUARY 2020

CMA Design Studio, Inc.
 ARCHITECTURE PLANNING INTERIOR DESIGN
 232 Andalusia Avenue • Suite 101 • Coral Gables, Florida 33134 • T: 305.448.4200





BRILAND RESIDENCES AND MARINA BACK OF HOUSE - STAFF LIVING QUARTERS BUILDING - FRONT ELEVATION SCALE: 1/4"=1'-0"
Schematic Design JANUARY 2020

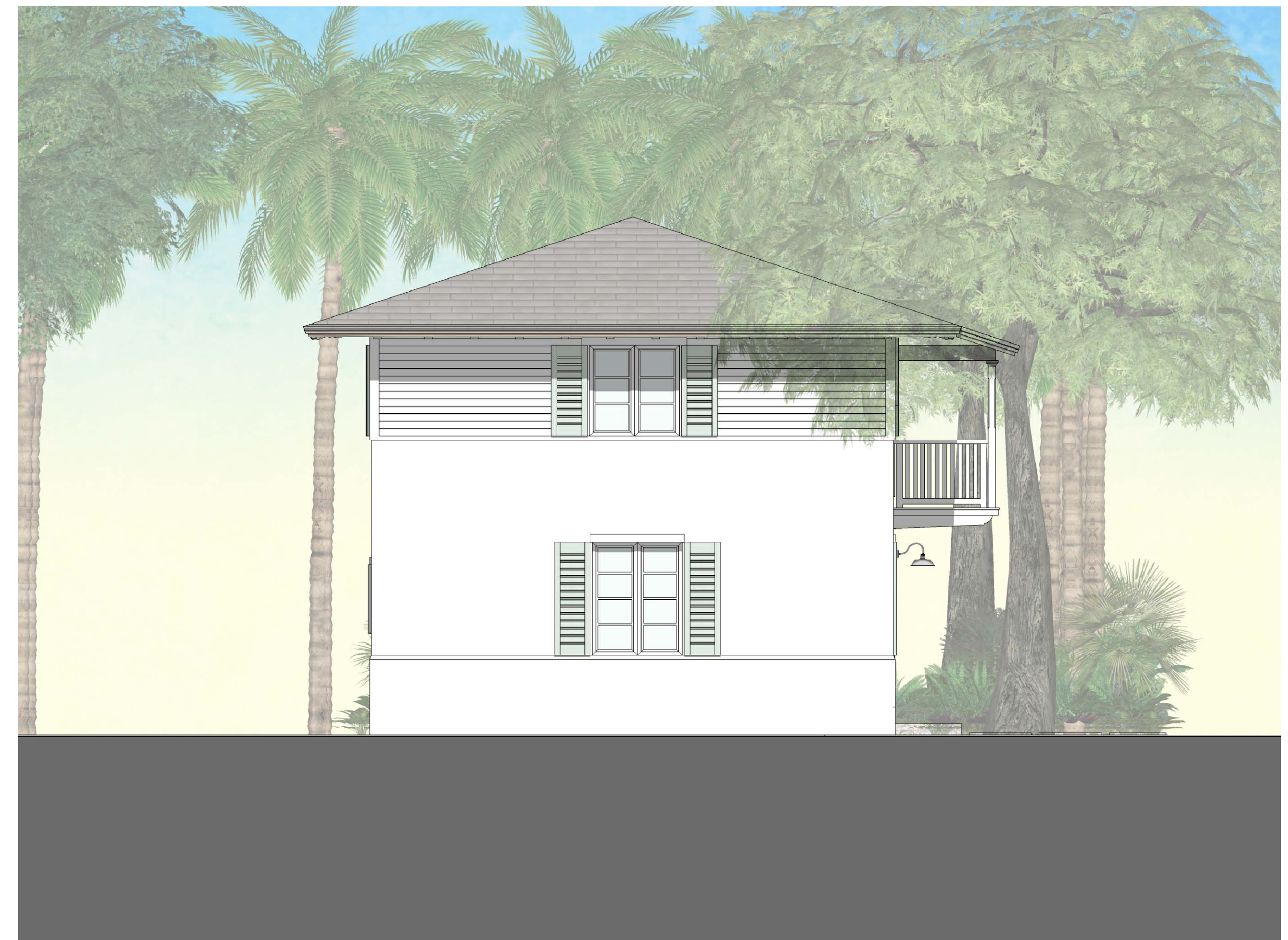
BAHAMAS

CMA Design Studio, Inc.
ARCHITECTURE PLANNING INTERIOR DESIGN
232 Andalusia Avenue • Suite 101 • Coral Gables, Florida 33134 • T: 305.448.4200



BRILAND RESIDENCES AND MARINA BACK OF HOUSE - STAFF LIVING QUARTERS BUILDING - REAR ELEVATION SCALE: 1/4"=1'-0"
BAHAMAS
Schematic Design JANUARY 2020

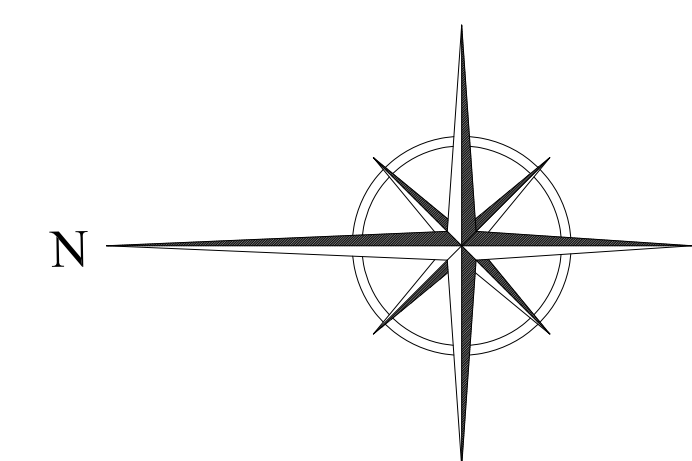
CMA Design Studio, Inc.
ARCHITECTURE PLANNING INTERIOR DESIGN
232 Andalusia Avenue • Suite 101 • Coral Gables, Florida 33134 • T: 305.448.4200

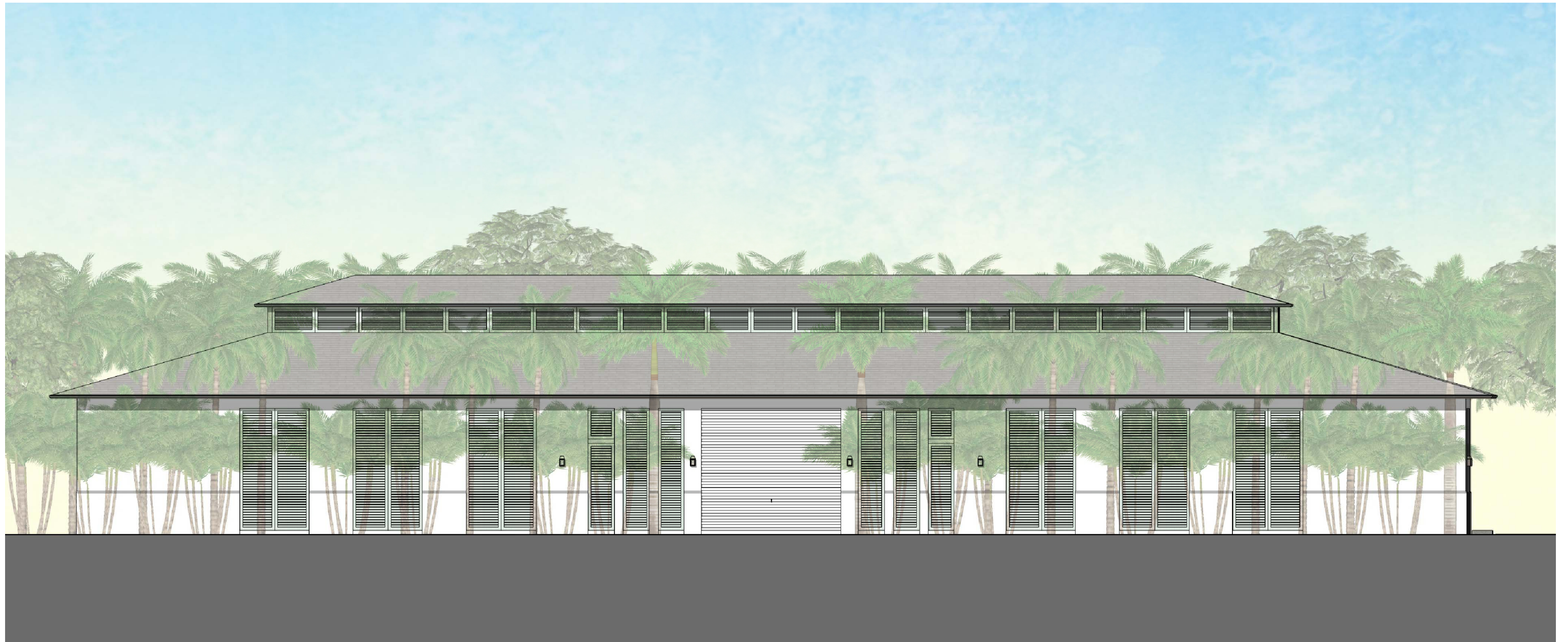


BRILAND RESIDENCES AND MARINA BACK OF HOUSE - STAFF LIVING QUARTERS BUILDING - SIDE ELEVATIONS SCALE: 1/4"=1'-0"
Schematic Design JANUARY 2020

BAHAMAS

CMA Design Studio, Inc.
ARCHITECTURE PLANNING INTERIOR DESIGN
232 Andalusia Avenue • Suite 101 • Coral Gables, Florida 33134 • T: 305.448.4200

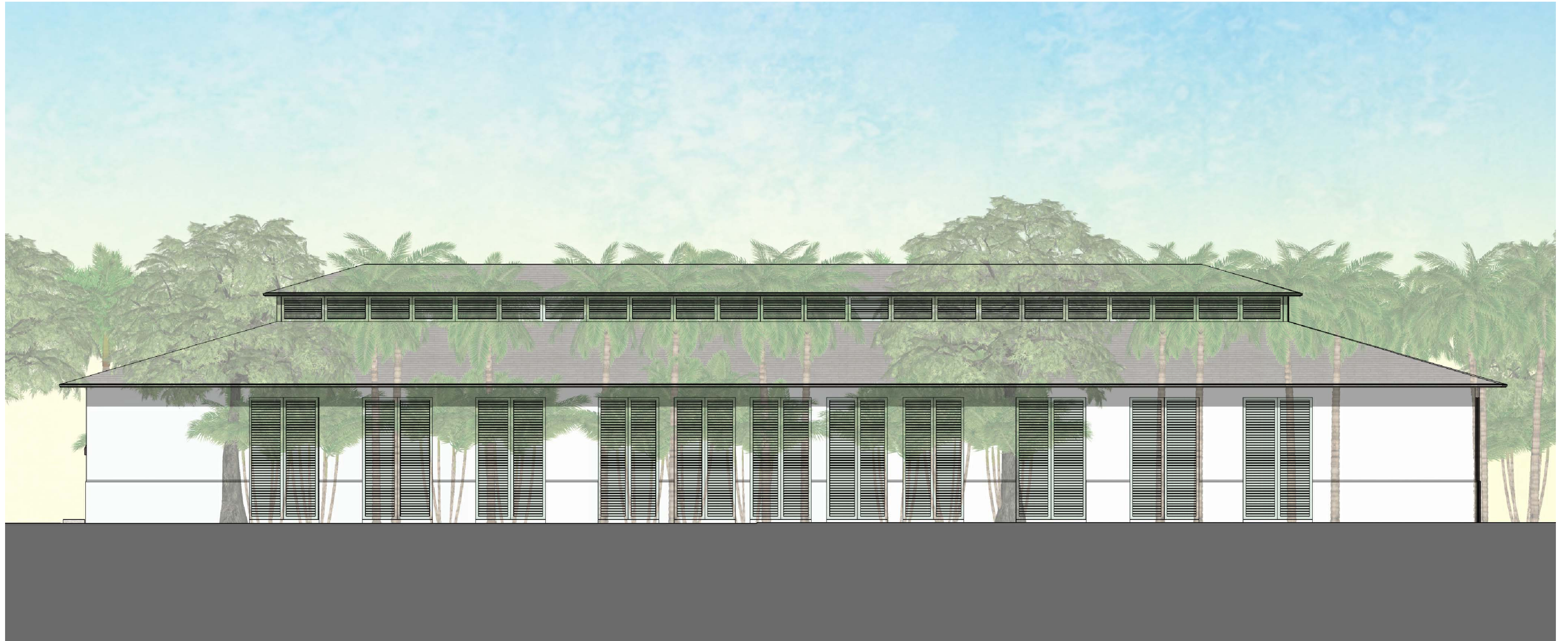




Harbour Island
Eleuthera, BAHAMAS

BACK OF HOUSE - UTILITY BUILDING - FRONT ELEVATION SCALE: 3/16"=1'-0"
Schematic Design JANUARY 2020

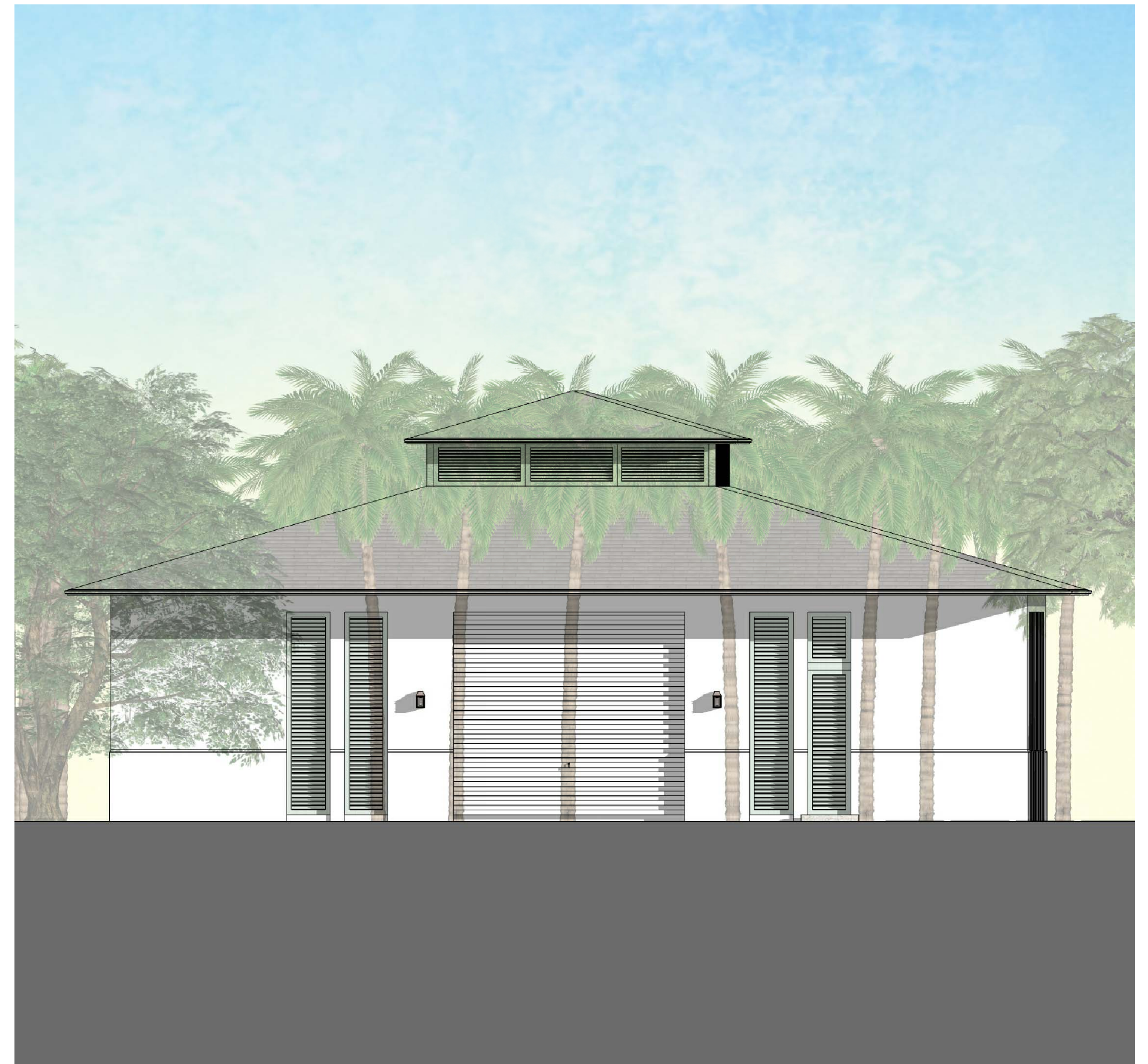
CMA Design Studio, Inc.
ARCHITECTURE PLANNING INTERIOR DESIGN
232 Andalusia Avenue • Suite 101 • Coral Gables, Florida 33134 • T: 305.448.4200

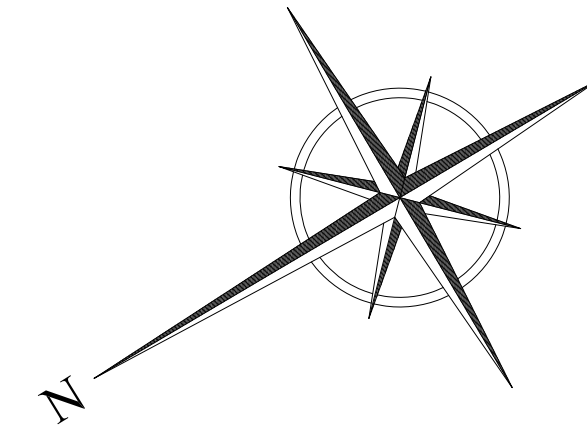
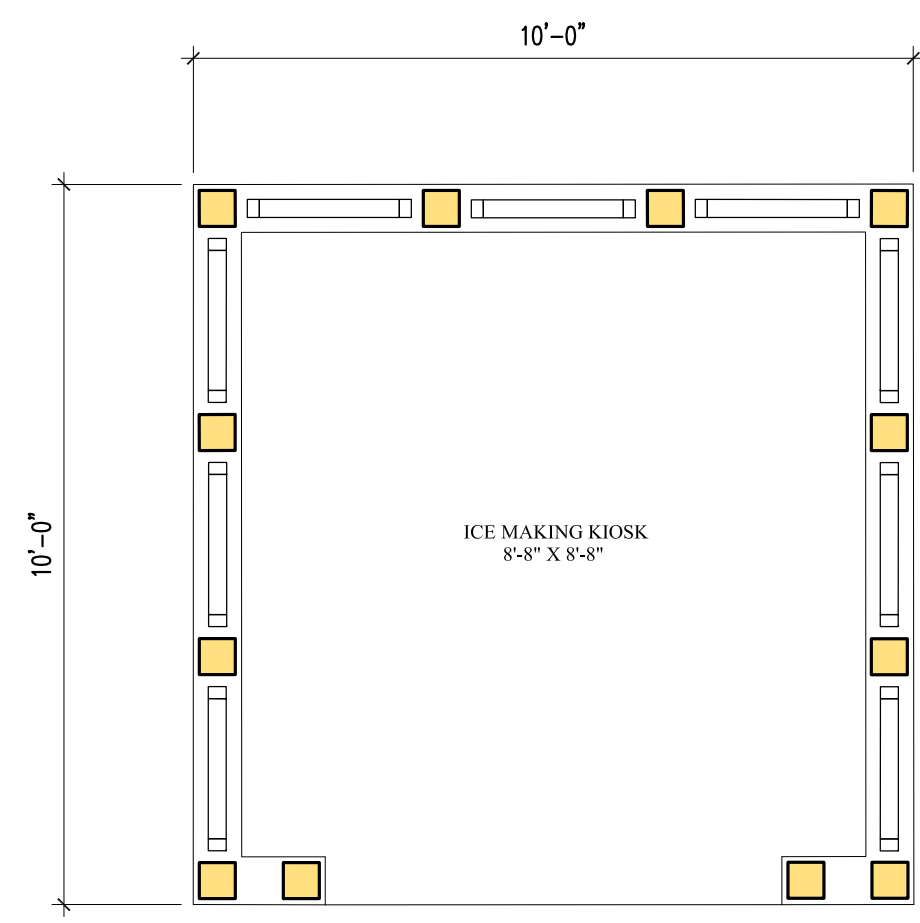


Harbour Island
Eleuthera, BAHAMAS

BACK OF HOUSE - UTILITY BUILDING - REAR ELEVATION SCALE: 3/16"=1'-0"
Schematic Design JANUARY 2020

CMA Design Studio, Inc.
ARCHITECTURE PLANNING INTERIOR DESIGN
232 Andalusia Avenue • Suite 101 • Coral Gables, Florida 33134 • T: 305.448.4200





FLOOR PLAN



FRONT ELEVATION



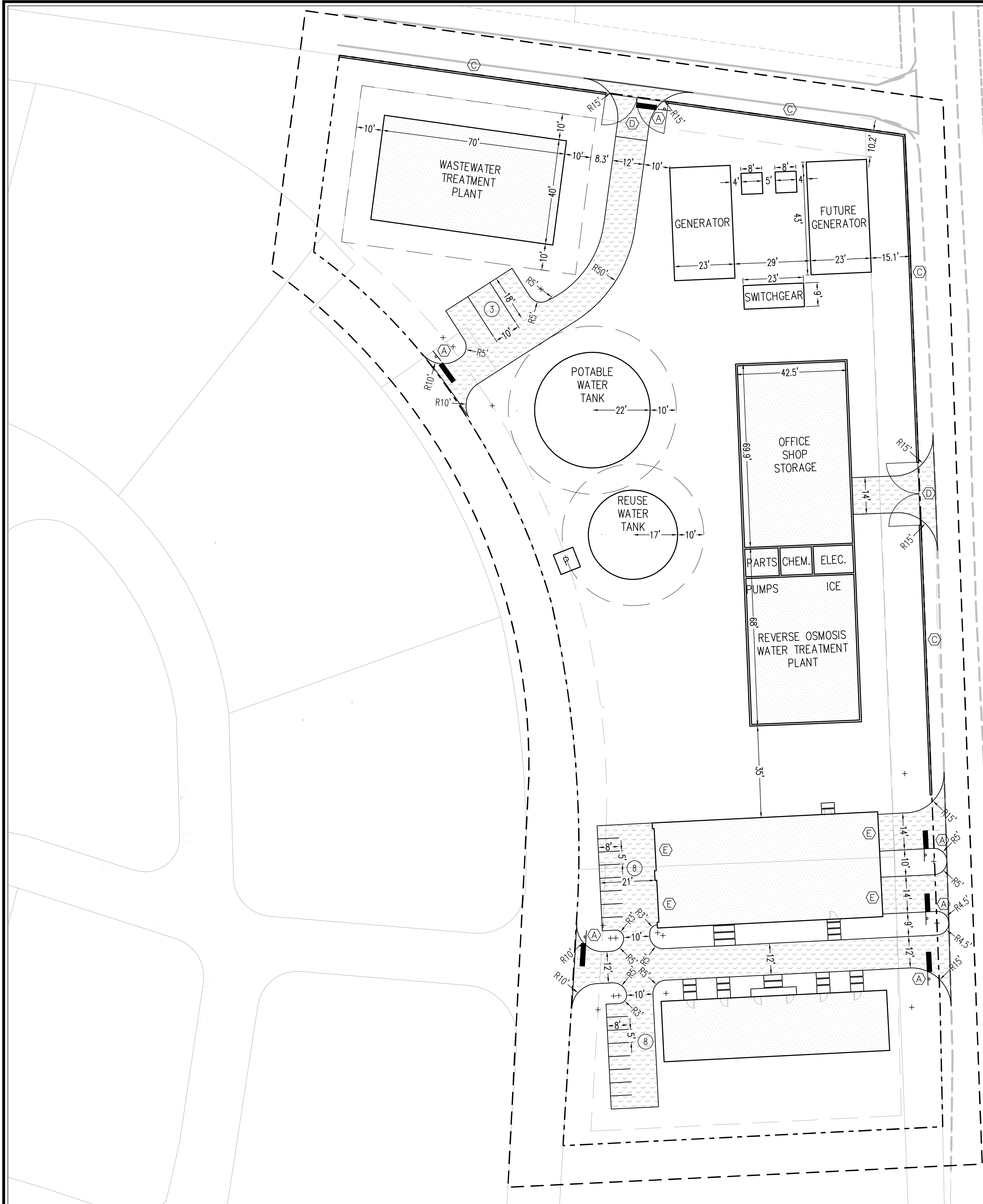
REAR ELEVATION



SIDE ELEVATION



SIDE ELEVATION



QUEENS HIGHWAY

SITE LEGEND

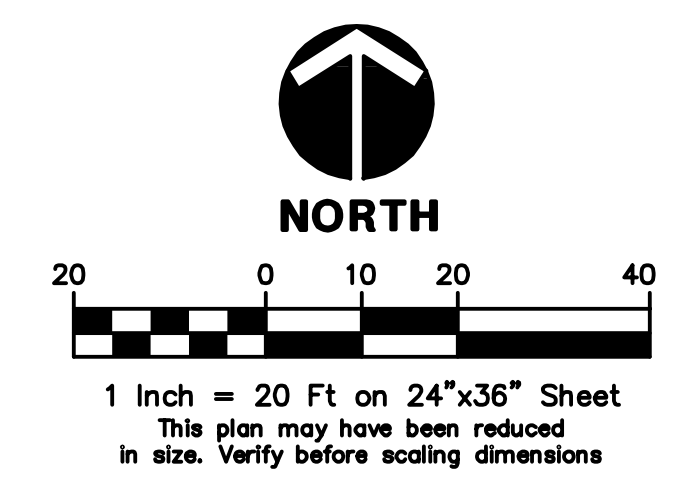
- PROPERTY LINE
- PROJECT LIMITS
- [Pattern] BUILDING FOOTPRINT
- [Pattern] CRUSHED SHELL SURFACE
- [Pattern] CONCRETE PAVEMENT
- ⑤ PARKING SPACE COUNT

SITE KEY DATA

- Ⓐ 24" WHITE STOP BAR MARKING W/ STOP SIGN (REFER TO F.D.O.T. INDEX 17346)
- Ⓑ BRICK PAVERS
- Ⓒ SCREENING WALL
- Ⓓ METAL GATES
- Ⓔ ROLL-UP DOORS

SITE NOTES:

1. DIMENSIONS ARE TO THE FACE OF CURB UNLESS OTHERWISE NOTED ON PLANS.
- 2.



HARRIS

Harris Civil Engineers, LLC
1200 Hillcrest Street
Suite 200
Orlando, Florida 32803
Phone: (407) 629-4777
Fax: (407) 629-7888
www.harriscivilengineers.com
EB 9814

**HARBOUR ISLAND BOH PROJECT
ELEUTHERA - BAHAMAS
NORTH ELEUTHERA - BAHAMAS
4M HARBOUR ISLAND LTD.**

Revisions:

No.	Date	Description
9		
8		
7		
6		
5		
4		
3		
2		
1		

**SITE +
GEOMETRY
PLAN**

Scale: SEE SCALE BAR Design: NDW
Date: 2020-02-03 Drawn: NDW
Project No.: 07493000 Checked: DWT

Release:

C-100

DAVID W. TAYLOR
FL P.E. 000224

COPYRIGHT © 2020 ALL IDEAS, ARRANGEMENTS AND PLANS INDICATED OR REPRESENTED BY THIS DRAWING ARE OWNED BY AND THE PROPERTY OF HARRIS CIVIL ENGINEERS, LLC AND WERE CREATED, EVOLVED AND DEVELOPED FOR USE WITH THE SPECIFIED PROJECT. HARRIS CIVIL ENGINEERS RESERVES COPYRIGHTS AND OTHER RIGHTS RESTRICTING THE DRAWING TO THE ORIGINAL PROJECT OR PURPOSE FOR WHICH THEY WERE PREPARED. REPRODUCTION, CHANGE OR ASSIGNMENT ARE PROHIBITED WITHOUT THE WRITTEN PERMISSION OF HARRIS CIVIL ENGINEERS.

Appendix D – Curriculum Vitae of Relevant Technical Persons

FRANKLYN O. HALL

Curriculum vitae

Nationality: Bahamian - Date of birth: 07th December 1968

Gender: Male – Contact: Cell: 242-5565135 Home: 242-6770818

Email: franklynhall@hotmail.com

Address: 26 St. Albans/Sherman Drive, Cable Beach E. PO Box CB11492, Nassau Bahamas

AREAS OF EXPERTISE

- Project Management, Horizontal Construction, Infrastructure and Utilities
- Land Use and Development
- Environmental Management, Impact Assessment, Water Resource Management
- GIS Mapping/Marine and Terrestrial Ecosystem Management

SYNOPSIS

Currently residing in Nassau, Bahamas, I am an innovative professional engineer, environmental and project manager respectively, with a strong background in water resource management and marine ecosystem management. A most recent project involved conducting an environmental reconnaissance survey on the island of Grand Bahama for the recent oil spill, due to hurricane Dorian and an assessment of the structural damage to residential and commercial structures, as a result of the same disaster. I have also worked on many past and recent marine and coastal based projects, where I was the senior person responsible for managing all environmental and marine based activities.

KEY COMPETENCIES

- Leading and managing complex projects, and identifying key skills necessary for development and execution of tasks and assignments.
- Coordinating and facilitating multi-stakeholder processes.

QUALIFICATIONS

MA	Social Policy, 2000, University of York (UK). Dissertation: Social Impacts of Tourism in Developing Countries
PG Dip	Environmental Economics and Environmental Management, 1999, University of York (UK).
BSc	Mechanical Engineering Technology, 1996 Savannah State University (Savannah Ga).

LANGUAGES

English: 1st Language

Spanish: Good.

INSTITUTIONAL MEMBERSHIPS AND ACHIEVEMENTS

- Member of Society of Operation Engineers (SOE) United Kingdom and registered Incorporated Engineer
- Member of Society of Professional Engineers (UK) and registered Professional Engineer
- Certified Environmental Professional (National Registry of Environmental Professionals). U.S.A.
- Certificate – Principles for Reviewing Environmental Impact Assessments (IDB) 2019

Caribbean Coastal Services Ltd.

P.O. Box CB-11524 Nassau, The Bahamas | Phone (242) 327-5348 | Fax (242) 327-4981
info@caribbeancoastal.com | www.caribbeancoastal.com

COMPREHENSIVE PROFESSIONAL EXPERIENCE

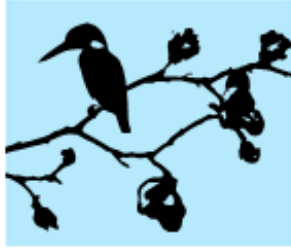
Time frame	Location/ scope	Organization	Position	Description
April 2019 to Present	Harbour Island	4M – Harbour Island Marina	Environmental Consultant of Record	Environmental Management and Consultancy Services, Preparation of EIA, EMP and project documentation
Nov 2018 to Present	West End Grand Bahama	Washington Development Co.	Environmental Consultant of Record	Responsible for EIA and EMP preparation, for development of hotel and marina construction project
December 2017 to 2019	Paradise Island Bahamas	Independent (ISG)	Project Manager	Management of operations for landscape development, chemical application/disposal and irrigation quality control for commercial and residential facilities.
August 2017 to December 2017	Harbour Island, Bahamas	Coastal Systems International	Environmental Consultant	Responsible for preparation of EIA document and environmental site monitoring and reporting
January 2017 to April 2017	South Cat Cay Development	Coastal Systems International	Environmental Consultant	Responsible for environmental site monitoring and report for all marine and terrestrial based activities, and control of EMP document
May 2016 To October 2016	Flamingo Cay Bahamas	Coastal Systems International Miami, Fla	Environmental Consultant	Responsible for designing and carrying out a Terrestrial Environmental Survey for the development of remote island in Southern Bahamas. Collection and processing of GPS data for native flora and fauna survey, and habitat mapping
July 2015 to Sept 2015	Nassau Bahamas	Blue Illusions Ltd	Lead Environmental Consultant	Assessment of marine mammal facility and conducting Environmental Impact Assessment study, for remote island with marine mammal based activities.
January 2013 to October 2015	Nassau Bahamas	Miya Bahamas Ltd	Site and Field Supervisor	Management of all field related activities for rehabilitation and upgrades to water supply, system (Non-Revenue Water Project. Quality control management for water infrastructure and new installation.
Dec 2010 to Nov 2012	Abaco Bahamas	Abaco Club Ritz Carlton	Manager Utilities/Engineer	Managed water distribution operations, waste water treatment facilities, new construction of infrastructure facilities, inspection and quality control. Staff training, site safety and control. Involved jointly with finance department in development of budgets, and development of system for billing based on water consumption, for residential home owners.
Dec 2005 to Nov 2010	Abaco Bahamas	Abaco Club Ritz Carlton	Project Manager/Infrastructure & Utilities	Managementfor the installation all horizontal construction works, including water, sewer, electrical and communications. Management of construction to high end residential and commercial structures, quality control and inspections
Jan 2004 to Nov 2005	Nassau Bahamas	Consolidated Water Company Ltd	Asst. Project Manager	Managed proper installation inspection of HDPE water mains, well pumps and disposal well for 12.5 million/gal per day reverse osmosis, salt water desalination plant.

BOOKS

Hall, F. (2014) Environmental Issues and Challenges in Developing Countries. Kindle Publishing

Caribbean Coastal Services Ltd.

P.O. Box CB-11524 Nassau, The Bahamas | Phone (242) 327-5348 | Fax (242) 327-4981
info@caribbeancoastal.com | www.caribbeancoastal.com



NIELSEN
landscape architects



TYLER NIELSEN

EDUCATION

Masters of Landscape Architecture
University of Colorado | Denver, CO

Bachelor of Arts, Fine Arts & Political Science
University of Colorado | Boulder, CO

PROJECT EXPERIENCE

Tyler brings expertise of creative planning, urban design, landscape architecture and community outreach experience to Nielsen Landscape Architects. As a LEED accredited professional, his passion for and expertise in sustainable planning and design informs all aspects of the studio's work. Tyler's diverse hospitality and resort planning and design experience includes local experience with the Soni Group, RETI, and the Starwood Group.

Tyler is an expert in creating and implementing beautiful designs in the subtropical Caribbean region. As a part of Tyler's previous experience, he led the effort to enhance and revitalize the Golden Rock Inn located in Nevis Island.

Tyler has a strong horticultural knowledge of subtropical plants. Using this knowledge he successfully design and oversaw the installation of many estate gardens located throughout the Caribbean region. These gardens can be found in Mustique, St. Kitts, and the Bahamas.

PROFESSIONAL AFFILIATIONS

State of Florida Register Landscape Architect #6667067
Council of Landscape Architectural Registration Boards
US Green Building Council LEED accredited professional
American Society of Landscape Architects member

www.nielsenlandarch.com

Caribbean Coastal Services Ltd.

P.O. Box CB-11524 Nassau, The Bahamas | Phone (242) 327-5348 | Fax (242) 327-4981
info@caribbeancoastal.com | www.caribbeancoastal.com

Curriculum Vitae

Agnessa L. Lundy, B.A., M.Res.

Candidate

Senior Environmental Scientist

Agnessa provides comprehensive environmental management duties for CCS, serving as project leader for the environmental compliance process in the production of environmental baseline studies (EBS), environmental impact assessments (EIA) and environmental management plans (EMP) for regulating and permitting agencies.

Representative Experience

Environmental Assessments

Caribbean Coastal Services Ltd.

Marine Lead for environmental team in the preparation and submission of environmental assessments for research and development projects throughout The Bahamas and the Caribbean.

Environmental Management

Bahamas National Trust, New Providence Office

Project manager for Community Based Conch Management in the Family Islands pilot in East Grand Bahama; Reversing the Decline of Bahamian Coral Reefs 10-year project; Conchervation Campaign.

Assisting with the development of a sustainable financing for the Science & Policy Department through the BNT Dive Tag Program, Expanding Research Permit fees to all National Parks in The Bahamas, Preparing grant proposals

Support the development of the BNT GIS Unit

Fundraising for the "Conchervation Campaign", "Reversing the Decline of Bahamian Coral Reefs", "Community Based Conch Management in the Family Islands" projects.

Project Advisor for University of the Bahamas student, Ms. Tika Penn, "Mangrove restoration in Adventure Learning Center"

Profile

Education

Masters by Research Student,
Conservation Biology
Manchester Metropolitan University (UK),
2017 – present

Queens College Center for Continuing
Education, Competitive Grant Writing
2019

Conservation Leadership in the
Caribbean (CLiC) Fellows Program
Grenada, 2016

B. Arts, Marine Science, Minor
Biology, Minor Agriculture
University of Hawai'i Hilo,
Hawaii, 2009

Associate of Arts in Biology w/ Agriculture
College of The Bahamas
Nassau, Bahamas, 2005

Certifications

PADI Specialty Diver – Coral Nursery, PADI
Advanced Open Water Scuba Certification,
PADI Emergency First Responder, Certified
Reef Check Eco Diver

Atlantic and Gulf Rapid Assessment Benthic
Certification (Advanced)

Class B Boat Captain, certified in Standards
of Training, Certification and Watchkeeping
for Seafarers (STCW),

Grant writing, Proposal development,
Drafting contracts

Knowledgeable in Geographic Information
Systems, Large format printing (HP),
Proficient in Microsoft Office suite and
ArcGIS10.1 Software, QGIS Software

Professional Memberships

Member of the Bahamas Spiny Lobster
Working Group

Caribbean Coastal Services Ltd.

P.O. Box CB-11524 Nassau, The Bahamas | Phone (242) 327-5348 | Fax (242) 327-4981
info@caribbeancoastal.com | www.caribbeancoastal.com

Agnessa Laurelle Lundy, B.A., M.Res. Candidate

Senior Environmental Scientist

The Nature Conservancy Northern Caribbean Program Conservation Coordinator

Project Manager for Fostering Watershed Conservation in the Pine Islands of the Bahamas; Grand Bahama Environmental Project.

Building a National Network of Marine Protected Areas – the Bahamas Pilot demonstration

Incorporating climate change and mangrove restoration into conservation planning

Spatial Data manager for The Bahamas and Turks and Caicos Islands (Northern Caribbean) – GIS

Assisted with the following environmental projects throughout The Bahamas:

- Coral nursery installation and monitoring;
- Implementing a Model Marine Reserve in the South Berry Islands Marine Reserve;
- Expanding Marine Protections Across The Bahamas;
- Mitigating the Threats of Invasive Alien Species - lionfish and casuarina;
- General outreach and education to build support for the expansion of The Bahamas National Protected Areas System;
- Spiny Lobster Fishery Improvement Project

Representative on the following committees.

- National Coastal Awareness Committee;
- National Invasive Species Strategy Committee;
- Biodiversity Committee;
- National Blue Flag Jury;
- National Implementation Support Partnership;
- National Steering Committee

Atlantis Paradise Island

As an Aquarist, initiating the mangrove donation program by establishing a black mangrove nursery and initiating the first red and black mangrove donation to the Victoria Pond Restoration project. Assisted with collecting marine life for exhibits and lead tours with the Sea Keeper Adventurer Programs.

Maintained exhibits in the Coral and Beach tower animal exhibits, and the Coral Towers Quarantine.

Assisted with collecting marine life for exhibits and lead tours

Presentations & Appearances

Current Status of Conch Salad Conch in The Bahamas
Community Based Conch Management in the Family Island
Connecting Coral Resilience with Coral Rehabilitation
Bahamians in Science and the Environment
Coral Nurseries and Reef Restoration
Anyone can work in Conservation Queen Conch and Conservation
Why expand the Andros West Side National Park?

Presentations & Appearances

Ecological spillover from a marine protected area replenishes an over-exploited population across an island chain <https://doi.org/10.1111/csp2.17>
Andrew S. Kough, Carolyn A. Belak, Claire B. Paris, Agnessa Lundy Heather Cronin, Gaya Gnanalingam, Sam Hagedorn, Rachel Skubel, Amanda C. Weiler, Allan W. Stoner

Multiplex microsatellite PCR panels for the neotropical red mangrove, *Rhizophora mangle*: combining efforts towards a cost-effective and modifiable tool to better inform conservation and management <https://doi.org/10.1007/s12686-020-01138-8> John Paul Kennedy, Hayley Craig, Antonella Jara-Cavieres, Agnessa Lundy, Richard F. Preziosi, Jennifer K. Rowntree

Expanding The Bahamas Marine Protected Areas Network To meet The Bahamas 2020 declaration. <https://bit.ly/3nVw4oU>
Lakeshia Anderson, Craig Dahlgren, Lindy Knowles, Lashanti Jupp, Shelley Cant-Woodside, Shenique Albury-Smith, Casuarina McKinnery-Lambert, Agnessa Lundy

Bonefish Pond Mangrove "Restoration": Monitoring Bonefish Pond. Poster. Lindy Knowles, Craig Dahlgren, Janeen Bullard, Felicity Burrows, Agnessa Lundy

Power of Her 2020 "Game Changer" Award Receipt

Caribbean Coastal Services Ltd.

P.O. Box CB-11524 Nassau, The Bahamas | Phone (242) 327-5348 | Fax (242) 327-4981
info@caribbeancoastal.com | www.caribbeancoastal.com



Curriculum Vitae
Mark Daniels, B.Sc., M.Sc.
Associate Principal - Environmental

Mark provides comprehensive environmental management duties for CCS, serving as project leader for the environmental compliance process in the production of environmental baseline studies (EBS), environmental impact assessments (EIA) and environmental management plans (EMP) for regulating and permitting agencies.

Representative Experience

Environmental Management

Crystal Palace Resort & Casino Demolition

Environmental consultant for the demolition, implosion and cleanup of the former resort. Project lead for production of Environmental Management Plan and Explosives Safety Plan.

Enhancing Coastal Protection for Climate Change

Resilience: Conducted field activities for a series of technical baseline studies for Green Climate Fund (GCF) Enhanced Direct Access (EDA) through the Caribbean Community Climate Change Centre (CCCCC) in six pilot countries.

Baha Mar Main Pier

Environmental lead for benthic assessments/data collection and production of EBS and EMP for modifications to the Main Pier.

Long Cay Redevelopment

Project lead for production of EIA and EMP. Government liaison for permitting process.

Bahamas Lodge Development

Terrestrial specialist, government liaison and project leader for production of EIA and EMPs.

Walker's Cay

Terrestrial surveys, data collection and habitat mapping. Project lead for production of EBS.

Davis Harbor

Habitat mapping and production of EBS for modifications to marina.

Bird & Cat Cay

Environmental lead for terrestrial and marine surveys, habitat mapping, and production of EBS, EIA and EMPs.

Phone: (242) 327-8708 // Fax: (242) 327-4981 // www.bebron.com

Profile

Education

M. Science, Botany
Miami University
Oxford, Ohio,

B. Science, Biochemistry
University of The West Indies
Kingston, Jamaica,

AS. Biology w/ Chemistry
College of The Bahamas
Nassau, Bahamas,

Professional Experience

Caribbean Coastal Services Ltd.
Nassau, Bahamas
Associate Principal - Environmental
Senior Environmental Scientist

The Bahamas National Trust
Nassau, Bahamas
Retreat Curator & New Providence
Parks Manager

Miami University
Oxford, Ohio
Research Assistant

Leon Levy Native Plant Preserve
Eleuthera, Bahamas
Preserve Manager

The Bahamas National Trust
Nassau, Bahamas
New Providence Park Warden

Lucayan Tropical Farms
Nassau, Bahamas
Micropropagation Lab Technician

Mark Daniels, B.Sc., M.Sc.
Associate Principal - Environmental

Adelaide Creek

Terrestrial survey and risk assessment for proposed development within Adelaide Creek system

Lighthouse Point

Terrestrial surveying, data collection and production of vegetation maps.

Little San Salvador

Terrestrial surveying, data collection, production of vegetation maps and environmental baseline study (EBS).

Orange Creek

Terrestrial surveying, data collection and production of vegetation maps.

Alligator Point

Terrestrial surveying, data collection and production of vegetation maps.

Integrated Coastal Zone Management (ICZM) Project - Andros

Terrestrial specialist for coastal surveys conducted at 7 proposed sites on Andros Island.

Protected Area Management

Mann Island

Project lead for terrestrial surveys, vegetation mapping, invasive species removal and petroleum waste cleanup.

Harrold and Wilson Ponds

Coordinator for invasive cattail (*Typha domingensis*) removal and management.

Bonefish Pond

Coordinator and project lead for mangrove cleanup, restoration and monitoring activities.

Retreat Gardens

Day to day management of Garden operations and curation of palm collection. Project coordinator for infrastructure development, utility repairs, building renovations, fundraisers, workshops, community meetings and Garden additions.

Levy Preserve

Day to day management of Garden operations and curation of native plant collection. Project coordinator for infrastructure [...]

Professional Experience cont.

Trauma and Emergency Medical Services Ltd.

Nassau, Bahamas

Physician's Assistant/EMT-B

Professional Memberships

Bahamas National Trust (Ambassador, Member)

Society for Conservation and Study of Caribbean Birds (SCSCB)

Certifications

PADI certified Open Water Diver

Emergency Medical Technician – B

Continuing Education

Highly Effective Teams (HET)

The Nature Conservancy,

Centre for Agriculture and Bioscience International (CABI) – Invasive Species CBA,

Tropical Botany Taxonomy Florida International University,

Emergency Medical Technician B Florida Medical Training Institute,

Publications

Geographical ecology of dry forest tree communities in the West Indies Journal of Biogeography

A Floristic Study of a former land bridge in The Bahama Archipelago Diss. Miami University

4M Harbour Island Ltd. Marina · BOH & Utility Corridor Impact Assessment · 5 November 2020

ANCILLENO ORLANDO DAVIS, PhD

P.O. Box FH14101, Nassau, Bahamas | +1 242 826-0405 (mobile) | ancilleno@scienceandperspective.com

EDUCATION

Miami University, Oxford OH, USA Ph.D. in Ecology, Evolution and Environmental Biology Dissertation: Understanding, enhancing and engaging with citizen science bird monitoring in eBird	2018
Miami University, Oxford OH, USA Graduate Certificate in Advanced Studio Art	2018
Miami University, Oxford OH, USA Graduate Certificate in College Teaching	2018
Miami University, Oxford OH, USA Graduate Certificate in Applied Statistics	2017
University of Maryland Eastern Shore, Princess Anne MD, USA M.Sc. in Marine Estuarine and Environmental Science Thesis: Epifloral and epifaunal assemblage of <i>Fucus vesiculosus</i> L. (Bladder wrack) in Indian River Inlet, Delaware, USA	2006
University of Maryland Eastern Shore, Princess Anne MD, USA B.Sc. Environmental Science Area of Concentration: Marine Science Magna cum Laude	2005
University of The Bahamas, Nassau N.P., Bahamas A.A. Biology with Chemistry	2001

AWARDS

Lavatus Powell Diversity Award – Graduate Students of All Nations (organization nomination)	January 2016 & January 2017
Lavatus Powell Diversity Award – Graduate student (individual nomination)	January 2016 & January 2017
Future Voices Sustainability Art Contest	May 2015 – December 2015
Marine Estuarine and Environmental Science Fellowship award	August 2005 – December 2006
Kirtland's Warbler Research and Training Program Scholarship	August 2003 – May 2005
Marilu Tolo Scholarship	August 1998 – December 2001

AVIAN ECOLOGY

New Providence, Bahamas Avian Ecologist - SEV consulting Conducted wild bird surveys for private clientele	2020
Blue Lagoon Island, Salt Cay Important Bird Area, Bahamas Sustainability Coordinator and Ecologist Conducted wild bird surveys regularly. Tripled the bird diversity record for Salt Cay in one year	2019
Science and Perspective, Bahamas CEO/OWNER, Ecologist Conduct environmental surveys and community assessments including over 1000 bird surveys in 2019 using various eBird.org protocols.	December 2018 - present
Miami University, Oxford OH Laboratory Instructor - Ornithology Taught wild bird identification and survey methods, conducted more than one hundred field surveys for wild birds in the Ohio area	2018
Miami University, Oxford, OH, USA	

Caribbean Coastal Services Ltd.

P.O. Box CB-11524 Nassau, The Bahamas | Phone (242) 327-5348 | Fax (242) 327-4981
info@caribbeancoastal.com | www.caribbeancoastal.com

<p>Primary Investigator – Habitat, observer and bird diversity in eBird records Generate habitat maps and analyze citizen-science bird records for the island of Grand Bahama to determine the impact of habitat, observer diversity and avian species occurrence on the biodiversity record.</p> <p>Kingston, Jamaica</p> <p>Support instructor - Caribbean Birding Trail professional bird guide training Support the training of regional bird guides in bird surveys and ethical guiding and conduct surveys in Trelawny and Kingston Jamaica to assess the bird community</p> <p>BirdsCaribbean, Virginia, USA; Bahamas; Caribbean</p> <p>Director-At-Large Promote and implement multilingual bird related education, training and conservation throughout the Caribbean; translate and review articles for the Journal of Caribbean Ornithology; Coordinate regional meetings with across political, linguistic and cultural borders with diverse partners</p> <p>The Bahamas National Oil Spill Response Team</p> <p>Logistic coordinator/Terrestrial, Avian and Marine Survey Observer Collaborated with local and international scientists, government agencies and military personnel to conduct pre-impact ecosystem assessment of the Cay Sal Bank, in response to the Deep Water Horizon Oil Spill. Facilitated research and training meetings for oil spill response team members. Collected data on bird diversity and behavior in the Cay Sal Bank</p>	<p>August 2015 – December 2018</p> <p>June 2015</p> <p>October 2012 – present</p> <p>April 2010 – May 2010</p>
---	--

TEACHING EXPERIENCE

<p>Miami University, Oxford OH</p> <p>Laboratory Instructor – Introductory Biology Followed established procedures and format; administered grades</p> <p>Miami University, Oxford OH</p> <p>Laboratory Instructor - Ornithology Developed teaching materials and examinations, following established format, administered grades</p> <p>Laboratory Instructor – Introductory Biology Followed established procedures and format, administered grades</p> <p>Assistant Instructor – Tropical Marine Ecology Delivered ecosystem content and supported student learning and in water safety; trained students in ecosystem survey methods</p> <p>Instructor – Social Media 101 (Institute for Learning in Retirement) Developed syllabus and adaptive course content to introduce nontraditional students to modern social media</p> <p>Instructor – Photography, Conservation and Culture in the Bahamas (Study Abroad, USA – Bahamas) Developed syllabus and overall course structure in collaboration with Art faculty; planned, coordinated and lead students on multi-island study abroad workshop</p> <p>Teaching Assistant – Tropical Marine Ecology Delivered ecosystem content and supported student learning and in water safety; trained students in ecosystem survey methods</p> <p>Bahamas Reef Environment Educational Foundation, San Salvador Island, Bahamas</p> <p>Instructor Teacher Training Workshop 2011 – Coral Reef Ecology, Sustainability, and Water Safety Developed course content and teaching materials to meet student needs; supported student safety in water</p> <p>Instructor Teacher Training Workshop 2009 – Coral Reef Ecology, Terrestrial Ecology, and Water Safety Developed course content and teaching materials to meet student needs; supported student safety in water</p> <p>University of the Bahamas, Nassau N.P., Bahamas</p>	<p>2018</p> <p>2018</p> <p>2017</p> <p>2015</p> <p>2015</p> <p>2015</p> <p>2013</p> <p>2010</p> <p>2008</p>
--	---

Caribbean Coastal Services Ltd.

P.O. Box CB-11524 Nassau, The Bahamas | Phone (242) 327-5348 | Fax (242) 327-4981
info@caribbeancoastal.com | www.caribbeancoastal.com

Lecturer – Introductory Biology (Non-Majors) Developed course content and teaching materials to meet established curriculum requirements	2010
University of Maryland Eastern Shore, Oxford OH	
Lab Instructor – Marine Botany Taught practical procedures and methods for Marine Botany, administered grades	2006
Instructor - Biology Lab Followed established syllabus and format, administered grades	2005
Supplemental Instructor – Calculus Based Physics Provided alternative teaching methods for physics students	2005
Supplemental Instructor – Economics (Micro/Macro) Provided alternative teaching methods for economics students	2005
Professional Association of Dive Instructors (PADI)	
Open Water SCUBA Instructor/ CPR and First Aid Instructor Safely deliver and evaluate standardized, measures-based content focused on mastery	2009
ReefCheck, Tropical Western Atlantic	
Instructor Taught local groups how to conduct a ReefCheck coral reef ecosystem survey using SCUBA or snorkel gear	2009
Atlantic and Gulf Rapid Reef Assessment (AGRRA)	
Instructor Taught local groups how to conduct AGRRA marine assessments, coral and fish identification	2011
 LEADERSHIP EXPERIENCE	
BirdsCaribbean, Virginia, USA; Bahamas; Caribbean	
Director-At-Large Promote and implement multilingual bird related education, training and conservation throughout the Caribbean; translate and review articles for the Journal of Caribbean Ornithology; Coordinate regional meetings with across political, linguistic and cultural borders with diverse partners	October 2012 – present
Bahamians Educated in Natural and Geospatial Sciences	
Founder – Primary Coordinator Connect Bahamian students and scientists with educational and professional opportunities in science, locally and internationally; foster an interdisciplinary network of scientists in the Bahamas	February 2011 – present
Graduate Students of All Nations, Miami University, Oxford OH, USA	
Founder - President Support and advocate for international students and scholars’ social, economic, and academic success through collaboration with on-campus support services and local businesses	August 2015 – present
Graduate Council, Miami University, Oxford OH, USA	
Graduate Students of Color/ Graduate Students of All Nations representative Support and advocate for graduate students of color and international students and scholars’ social, economic, and academic success via evaluation of graduate school petitions and discussions of university policy.	August 2015 – present
Center for American and World Cultures Advisory Council, Miami University, Oxford OH, USA	
Member – Graduate Student Representative Support and advocate for international students and scholars’ social, economic, and academic success through collaboration with on-campus support services and local businesses	August 2015 – present
Midwest Ecology and Evolution Conference	
Steering Committee - Social Media and Website Coordinator Developed and coordinated digital website content and integration with social media and email publicity of the event; coordinated transfer of content to subsequent conference committee	May 2015 – May 2016
Biology Graduate Student association, Miami University, Oxford OH, USA	

Caribbean Coastal Services Ltd.

P.O. Box CB-11524 Nassau, The Bahamas | Phone (242) 327-5348 | Fax (242) 327-4981
info@caribbeancoastal.com | www.caribbeancoastal.com

4M Harbour Island Ltd. Marina · BOH & Utility Corridor Impact Assessment · 5 November 2020

<p>Graduate Student Representative to the Biology department Visibility and Web Committee Support Biology Department use of digital media via web pages and social media, to promote student work and program offerings.</p> <p>Biology Graduate Student association, Miami University, Oxford OH, USA</p>	<p>May 2014 – May 2015</p>
<p>Graduate Student Representative to the Biology department faculty meetings Provide Graduate student perspective on topics of concern in faculty meetings and report to Biology Graduate Student Association on topics discussed in the meetings.</p>	<p>May 2014 – May 2015</p>
<p>The Nature Conservancy (TNC) Conservation Coordinator Coordinated conservation capacity building, outreach, and education projects in the Bahamas. Recruited or trained Bahamian researchers to collect ecosystem data in marine environments. Coordinated with National Ministries to deliver appropriate educational content to agents and schools throughout the country.</p>	<p>July 2008 – August 2012</p>
<p>The Kerzner Marine Foundation's (KMF) "The Blue Project" Coordinator Established and monitored appropriate goals, timelines and budgets to improve national capacity for conservation of native coral reefs and associated ecosystems. Coordinated conservation capacity building, outreach, and education projects in the Bahamas. Recruited or trained Bahamian researchers to collect ecosystem data in marine environments. Coordinated with National Ministries to deliver appropriate educational content to agents and schools throughout the country.</p>	<p>July 2008 – August 2012</p>
<p>The College of the Bahamas Job Placement and Career Advisory Committee Science and Environment Industry Representative – Elected Vice Chair (August 2010- June 2011) Established student engagement and training goals, coordinated national career day for college and high school students with interdisciplinary team. Collaborated with industry and government agency leadership to determine national goals for capacity building and education.</p>	<p>September 2009 – June 2011</p>
<p>The Bahamas Million Tree Campaign Coordinator Collaborated with Ministry of Environment, Bahamas National Trust, The Nature Conservancy and Commercial Plant growers to develop a nationwide native plant discount program and collect volunteer data from local groups and individuals that planted native species. Coordinated tree plantings with local government and official opposition ministers in public parks nationwide.</p>	<p>August 2008 – December 2009</p>
<p>The Khaled bin Sultan Living Oceans Foundation (LOF) - Global Reef Expedition Bahamas Coordinator Drafted application for the Bahamas to be the first country on the Global Reef Expedition. Collaborated with The LOF, government ministries, NGO's and commercial partners to develop local itineraries, priorities and best practices for marine research. Coordinated local scientists to participate in data collection including developing training programs where necessary to develop needed capacity. Conducted data collection and entry using AGRRA protocols. Facilitated import of specialized equipment for visiting scientists.</p>	<p>August 2010 – December 2011</p>
<p>The Bahamas First Coral Nurseries – New Providence, Bahamas Project Leader Assessed and adapted US National Oceanic and Atmospheric Administration and Coral Restoration Foundation techniques and procedures for application in the Bahamas. Used Geospatial Information Systems to determine feasible locations for coral nursery implementation. Collaborated with TNC, KMF, BNT and Bahamas Department of Marine Resources to raise funds for training, supplies and implementation. Coordinated local and international scientists for training and nursery establishment. Maintained nursery records and assessed coral growth.</p>	<p>August 2010 – August 2012</p>
<p>The Bahamas National Coastal Awareness Committee Social Media Chair Represented The Nature Conservancy and scientific community on the committee. Established communication priorities around the selected theme. Developed and coordinated outreach and communication via Social Media.</p>	<p>January 2011 – May 2012</p>
<p>The Bahamas National Biodiversity Sub-committee to the Bahamas Environment Science and Technology (BEST) Commission</p>	

Caribbean Coastal Services Ltd.

P.O. Box CB-11524 Nassau, The Bahamas | Phone (242) 327-5348 | Fax (242) 327-4981
info@caribbeancoastal.com | www.caribbeancoastal.com

Ecologist/ TNC Representative	January 2011 – May 2012
Represented The Nature Conservancy and scientific community on the committee. Along with the committee evaluated species introductions, infractions against CITES regulations, proposed large-scale agricultural and sustainable energy developments and oil exploration regulations.	
The Bahamas National Oil Spill Response Team	
Logistic coordinator/Terrestrial, Avian and Marine Survey Observer	April 2010 – May 2010
Collaborated with local and international scientists, government agencies and military personnel to conduct pre-impact ecosystem assessment of the Cay Sal Bank, in response to the Deep Water Horizon Oil Spill. Facilitated research and training meetings for oil spill response team members.	
Center for American and World Cultures	
Graduate Assistant	October 2014 – August 2016
Develop and manage media database, social media and website content; develop and distribute event publicity materials to partners and public; compile and share international student feedback when appropriate	
RESEARCH EXPERIENCE	
Miami University, Oxford, OH, USA	
Primary Investigator – Habitat, observer and bird diversity in eBird records	August 2015 – December 2019
Generate habitat maps and analyze citizen-science bird records for the island of Grand Bahama to determine the impact of habitat, observer diversity and avian species occurrence on the biodiversity record.	
USA; Jamaica; Bahamas	
Study skin preparation	2001-present
Prepared ornithological specimen skins for scientific study, including species, gender and reproductive state of specimen and teaching students correct mounting procedure.	
Community Conch – Berry's Conch Project - Berry Islands, Bahamas	
Field Technician	June 2009
Conducted towed snorkeler and SCUBA transect surveys for conch (<i>Lobatus gigas</i>) along with biometrics to determine conch population size, distribution and demographics	
Kerzner Marine Foundation – August 2008 REA of Coral Reef Communities around New Providence and Rose Island	
AGRRA coral survey scientist	August 2008
Completed training in field identification of native coral and fish. Conducted surveys of benthic communities while on SCUBA following the AGRRA methodology.	
University of Maryland Eastern Shore, Indian River Inlet, DE and Princess Anne, MD	
Researcher - Epifauna and epiflora of <i>Fucus vesiculosus</i> in Indian River Inlet.	August 2005 – December 2006
Conducted water quality analysis and taxonomic identification of macroalgae, microalgae, and crustaceans associated with <i>Fucus vesiculosus</i> (Bladder wrack) in the Delmarva Peninsula.	
Field and Lab Technician – UMES Precision Agriculture Project	August 2005 – December 2006
Conducted drone flights using fixed wing and helicopter style remote controlled aircraft to collect visual data on agricultural fields. Used ArcGIS to orthorectify and classify images for use in precision agriculture studies. Trained graduate and undergraduate students in the use of Unmanned Aerial Vehicles and digital imaging equipment and software. Developed procedure manuals for common lab activities.	
Abaco Parrot Project – Abaco Island, Bahamas	
Field and GIS Technician	May 2003 – August 2004
Worked closely with the endangered, endemic Bahama Parrot (<i>Amazona leucocephala bahamensis</i>). Searched for and monitored nests, conducted surveys of nesting activity and assessments of nesting habitat. Used ArcGIS to view maps and plan research activities with lead investigators. Supported international researchers in the identification of native plants and Spanish-English translation of written materials and verbal communication with partners from Puerto Rico.	
Kirtland's Warbler Recovery Effort – Andros and Eleuthera Islands, Bahamas	
Field Technician	May 2003 – August 2004

Caribbean Coastal Services Ltd.

P.O. Box CB-11524 Nassau, The Bahamas | Phone (242) 327-5348 | Fax (242) 327-4981
info@caribbeancoastal.com | www.caribbeancoastal.com

Observation, capture, identification, banding and measurement of native/migrant bird species, specifically the endangered Kirtland's warbler (*Dendroica kirtlandii*) Identification and measurement of native plant species. Data analysis and presentation. Recruitment of new students into the program

United States Fish and Wildlife Service (USFS) – Huron Manistee National Forest, Mio, MI, USA

Summer Intern

June 2002 – August 2002

Delivered public lectures on the ecology of the Bahamas. Assisted researchers in radiotelemetry and capture of Massasauga rattlesnakes (*Sistrurus catenatus*) and Box turtles (*Terrapene* sp.). Survey endangered Kirtland's Warblers as part of annual census. Enter survey data into Arc View GIS database.

OTHER EMPLOYMENT EXPERIENCE

Blue Lagoon Island, Salt Cay, Bahamas

Sustainability coordinator

January 2019 – Present

Assess and evaluate organizational sustainability to establish targets, develop and implement training to achieve multi-level sustainability goals.

Dolphin Cay, Atlantis, Paradise Island, Bahamas

Dolphin Trainer

July 2008 – August 2008

Observe and report on dolphin and sea lion behavior. Prepare food according to animal needs and veterinary staff recommendations.

SCUBA diver

April 2007 – July 2008

Maintain safe, hygienic environment in dolphin and sea lion habitats. Small engine maintenance and repair. Forklift operation.

Bahamas Humane Society, Bahamas

Kennel Care Technician/ Veterinary Assistant

July 2008 – August 2008

Dog and cat obedience training using positive reinforcement and Least Reinforcing Stimuli. Kennel cleaning and maintenance. Inspect animals for injury and administration of medication. Humane and ethical care of animals was the priority.

PUBLICATIONS

Davis, A., McCarty J. (2018). *Combining citizen science and open source geospatial techniques improves habitat knowledge for Bahamian birds.* Submitted to *Journal of Caribbean Ornithology*.

Rivera-Milán, F. F., Collazo, J. A., Stahala, C., Moore, W. J., **Davis, A.**, Herring, G., ... Bracey, W. (2005). *Estimation of density and population size and recommendations for monitoring trends of Bahama parrots on Great Abaco and Great Inagua.* *Wildlife Society Bulletin*, 33(3). [https://doi.org/10.2193/0091-7648\(2005\)33\[823:EODAPS\]2.0.CO;2](https://doi.org/10.2193/0091-7648(2005)33[823:EODAPS]2.0.CO;2)

Davis, Ancilleno. 2006. *Epifloral and epifaunal assemblage of *Fucus vesiculosus* L (bladderwrack) in Indian River Inlet, Delaware, USA.* Master's Thesis

Currie, D., J.M. Wunderle, Jr., D.N. Ewert, M. Anderson, **A. Davis,** and J. Turner. 2005. *Winter habitat distribution of birds in central Andros, The Bahamas: implications for management.* *Caribbean Journal of Science* 41:75-87.

Currie, D., J.M. Wunderle, Jr., D.N. Ewert, **A. Davis,** and Z. McKenzie. 2005. *Winter avian distribution in six terrestrial habitats on southern Eleuthera, The Bahamas.* *Caribbean Journal of Science* 41:88-100.

Bahamas Reef Environment Educational Foundation. "Take Care of the Coral Reefs!" (translator/voice actor)

INVITED TALKS AND PRESENTATIONS

Davis, Ancilleno (July 29th 2019) *Social media 101 for Conservation engagement.* *BirdsCaribbean Regional Meeting, July 25th to July 29th 2019, Gosier, Guadeloupe.*

Davis, A., Tossas, A. (July 27th 2019) *Mentorship workshop.* *BirdsCaribbean Regional Meeting, July 25th to July 29th 2019, Gosier, Guadeloupe.*

Caribbean Coastal Services Ltd.

P.O. Box CB-11524 Nassau, The Bahamas | Phone (242) 327-5348 | Fax (242) 327-4981
info@caribbeancoastal.com | www.caribbeancoastal.com

Davis, A., Meister, K. (July 26th 2019) *Private Island Partnerships for Conservation: Blue Lagoon Case Study*. BirdsCaribbean Regional Meeting, July 25th to July 29th 2019, Gosier, Guadeloupe.

Davis, A., Eneas, K. (July 26th 2019) *ABC'S of Engagement with Conservation Data: Dubstep Remix*. BirdsCaribbean Regional Meeting, July 25th to July 29th 2019, Gosier, Guadeloupe.

Davis, Ancilleno (June 3rd 2017) *Changing Faces of International Bird Conservation*. The Kirtland's Warbler Festival, Roscommon, MI.

Davis, Ancilleno (2017) *Keynote presentation: Preserving "Our Michigan" Birds in the Bahamas, an Overview of Bahamian and Caribbean Conservation and the Importance of Citizen Science*. Detroit Audubon Annual Earth day Celebration and Teach-In: "Soaring to New Heights" April 22nd 2017.

Davis, Ancilleno (2017) *Lost in transition: Studying working and living across boundaries*. 14th annual Miami English Graduate and Adjunct Symposium, Friday March 10 2017. Miami University, Oxford, OH.

Davis, Ancilleno (2016) *Transitions: How International Students Experience and Survive American Academia*. Race Class Gender and Sexuality Symposium, Wright State University, Dayton, OH.

Davis, A., Loring, G. (2015) *Cornucopia, Utopia, Dystopia: public sculpture and interactive experience*. Miami University, Oxford, OH.
<https://www.facebook.com/MUCornucopia>; <https://twitter.com/MUCornucopia>

Davis, Ancilleno (2015) *The Caribbean Birding Trail: Local Experts Lead the Way*. Miami Valley Audubon, May 11th 2015, Oxford, OH

Palmeri, J., Kashtan, A., Mina, L., Hasan, A., Bui, H., **Davis, A.** and Cimasko, T. (2015). *Dead Weight? Addressing On-Campus Racial Politics in the Class room in the Wake of the "Concerned Faculty Member" Letter*. Race Class Gender and Sexuality Symposium, Miami University, Oxford, OH.

Davis, Ancilleno (2014) *A Birder's Migration* (Talk March 7th and Photography Exhibit March 3rd-28th) MacMillan Hall, Miami University, Oxford, OH.

Davis, Ancilleno (2014) *Local Science, Internationally: Something for Nothing*. 11th Annual Miami English Graduate and Adjunct Symposium, March 14th, 2014, Miami University, Oxford, OH.

Davis, A., The Kerzner Marine Foundation, The Nature Conservancy (2012) *The Blue Project: Coral Conservation, Monitoring and Capacity Building*. Poster presentation at the International Coral Reef Symposium, Cairns Australia, 2012

LANGUAGES

English – native language
Spanish – speak, read and write fluently
American Sign Language – basic
Python programming language – intermediate
R programming language – advanced
JavaScript – intermediate

SOFTWARE

Adobe Suite: Acrobat Pro XI; Photoshop CS6; Adobe Illustrator
ENVI 5.4
ESRI Arc Suite: ArcGIS; ArcMap
Google: Blogger; Docs; Fusion Tables; Google Earth Pro; Hangouts; Sheets; Sites; Slides
Microsoft Suite: Access; Excel; Outlook; PowerPoint; Publisher; Word
QGIS

MEMBERSHIPS

Bahamians Educated in Natural and Geospatial Sciences - Founder
BirdsCaribbean – Director-at-Large
Graduate Students of All Nations – Founder/ President
PADI – Professional Association of Dive Instructors – Open Water Instructor

CERTIFICATIONS

PADI – Open Water SCUBA instructor

Caribbean Coastal Services Ltd.

P.O. Box CB-11524 Nassau, The Bahamas | Phone (242) 327-5348 | Fax (242) 327-4981
info@caribbeancoastal.com | www.caribbeancoastal.com

Emergency First Response First aid and CPR instructor
Reef Resilience Trainer
ESRI ArcGIS certificate
Rotomotion UAV pilot certificate
BirdsCaribbean certified Bird Guide

Caribbean Coastal Services Ltd.

P.O. Box CB-11524 Nassau, The Bahamas | Phone (242) 327-5348 | Fax (242) 327-4981
info@caribbeancoastal.com | www.caribbeancoastal.com

Appendix E – Environmental Management Plan (Fifth Submittal) Briland
Residences and Marina (Formally Known as Harbour Island Marina) Harbour Island – **Included
by Reference.**

Caribbean Coastal Services Ltd.

P.O. Box CB-11524 Nassau, The Bahamas | Phone (242) 327-5348 | Fax (242) 327-4981
info@caribbeancoastal.com | www.caribbeancoastal.com